



Switchable Film for Switchable Glass manufacturing

PRODUCT DESCRIPTION

TYPICAL APPLICATION

EASYMOTION Switchable is an opaque 0.4 mil polyester film containing dispersed polymer liquid crystals and conductive layers. Connected to the mains, the film instantly turns clear when the power is ON and comes back to its opaque state when the power is OFF. The product is available either on roll format of max 50 lm or cut at required size and equipped with copper bus bars.

EASYMOTION Switchable must be connected to the mains only with a MACtac Power Unit

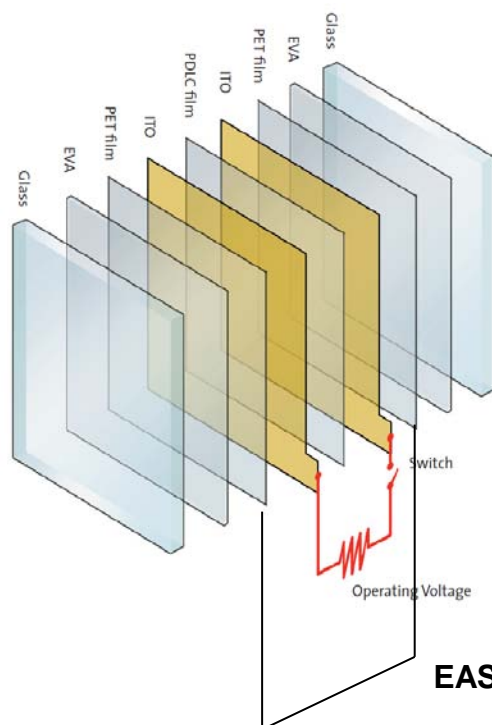
EASYMOTION Switchable is designed to manufacture Switchable Glass, mainly for indoor utilization.

Switchable glass is a very trendy product that designers and architects recommend for :

Wall partitioning, conference or meeting rooms, exhibition booth, banks counters, shop windows (if not exposed to high temperatures or direct sunlight), waiting rooms in railway stations, airports, lounges and restaurants

In its opaque state, EASYMOTION switchable can be used as a rear projection screen with an viewing angle of 180° on both sides

EASYMOTION Switchable in laminated glass



EASYMOTION Switchable_

Film Format

The product is available either

- on **roll format of max 50 lm**
- or **cut at required size and shape and equipped with copper bus bars.**

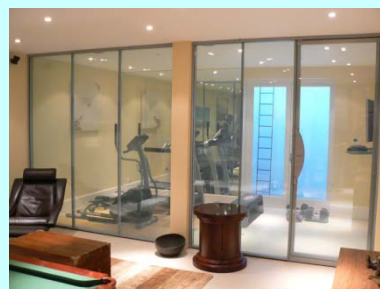
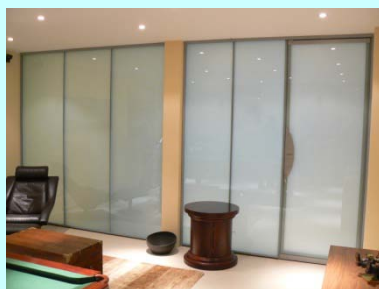
Maximum width : 1150 mm

Film Thickness : 380 μ

Charcteristics

Power OFF

Opaque



Power ON

Clear

Operation Voltage and Hertz : AC110V, 50 or 60Hz

Power Consumption: 5 W/m² at 110V, 50Hz at room temperature

Response Time: switch on to 90% of maximum haze within 1 second and off to 10% of minimum haze within 1 second.

Operatonial Temperature : -15°C to 50°C

Converting and Installation

- **Professionnal conversion / installation is required**
- **The installation MUST BE made in total compliance with the installation guidlines supplied by MACtac**
- **Customers and installers must refer to the product specifications and match the handling, storing and installation documentation issued by MACtac**
- **EASYMOTION Switchable must be connected to the mains only with a MACtac Power Unit**

IMPORTANT NOTICE

All MACtac products are subject to careful quality control throughout the manufacturing process and are warranted to be of merchantable quality and free from manufacturing defects. Published information concerning MACtac products are based upon research which the Company believes to be reliable but such information do not constitute a warranty. Because of the variety of possible uses for MACtac products and the continuing development of new uses, the purchaser should carefully consider the fitness and performance of the product for each intended use and the purchaser assumes all risks in connection with such use. Seller shall not be liable for damages in excess of the purchase price of the product or for incidental or consequential damages. All specifications are subject to change without prior notice.